

experience
more
together

ZHEJIANG CFMOTO POWER CO.,LTD.

NO.116,Wuzhou Road,Yuhang Economic Development Zone
Hangzhou 311100,Zhejiang Province.

cfmoto.com.ua



ТОВ «СФ МОТОРЗ».
Офіційний дистриб'ютор в Україні.

email: info@cfmoto.com.ua

<http://cfmoto.com.ua>

Facebook: CFMOTO.UA

YouTube: CFMOTO_UA_Official

Instagram: [cfmoto_ua_official](https://www.instagram.com/cfmoto_ua_official)

MD_2023



CFORCE ACCESSORIES



Фотографії наведені лише для ілюстрації. Технічні характеристики можуть бути змінені без попередження. Деталі в магазині.

experience
more
together

CFORCE 625
CFORCE 625 TOURING

P07 — P12

ACCES- SORIES

CFORCE 450
CFORCE 450L
CFORCE 520
CFORCE 520L

P01 — P06



CFORCE 850 XC
CFORCE 1000

P13 — P18

CFORCE

UNIVERSAL

P19 — P22



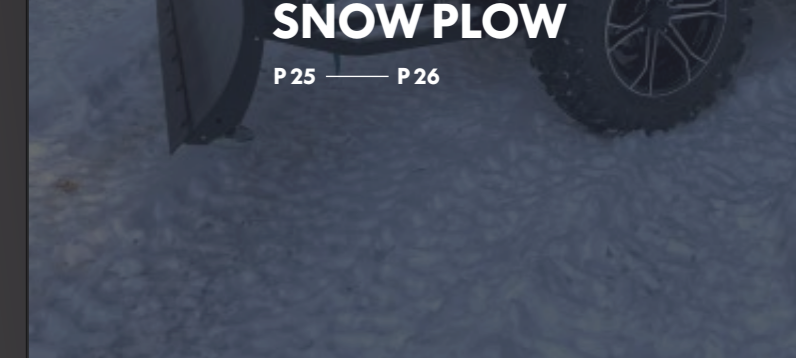
TOWING

P23 — P24



SNOW PLOW

P25 — P26



CFMOTO POWER

P27 — P28



Front Bumper Assembly

Accessory Code: 9DQV-801100-3000

Features:

- Steel Tube diameter 32mm & wall thickness 2mm
- Durable, E-coated with black powder coat
- Provides headlight protection and front protection of vehicle
- Perfectly fits on CFORCE 450/450 L & CFORCE 520/520 L easy to install
- Works with CFMOTO winch system and plow system



Rear Bumper Assembly

Accessory Code: 9DQV-801300-3000

Features:

- Steel Tube diameter 32mm & wall thickness 2mm
- Durable, E-coated with black powder coat
- Provides taillight protection and rear protection of vehicle
- Perfectly fits on CFORCE 450/450 L & CFORCE 520/520 L easy to install
- Works CFMOTO hitch system



Vehicle Cover

Accessory Code: 85224Z-00000 (dark green)

Accessory Code: 85224Z-00100 (blue)

Features:

- CFMOTO dark green cover with CFMOTO logo
- With reflecting straps, visually obvious
- Made of UV-resistant solution 100% polyester
- Protects windshield and vehicle body panels from abrasion
- Weather-resistant trailering cover protects your vehicle during storage and transportation
- Perfectly fit CFORCE 450 L & CFORCE 520 L & CFORCE 625 Touring with or without CFMOTO accessories (bumpers, rear box, front box, front basket, windshield and others)
- The cover can be fit on CFORCE 450 & CFORCE 520 & CFORCE 625 with or without CFMOTO accessories, but a little loose



Seat Cover

Accessory Code: 9DQV-808400-3000

Features:

- CFMOTO Seat Cover is designed for CFORCE 450 and CFORCE 520 (short version)
- It is made of canvas, and has drawstring and elastic cloth strap to ensure cover ATV seat firmly
- Puncture-proof, Flame retardant, Tear-proof
- Seat cover is used to protect seat and make the riding comfortable



Rack Extender Assembly

Accessory Code: 9DRV-802400-3000

Features:

- Steel Tube Diameter: \varnothing 22mm
- Durable, E-coated with black powder coat
- Perfectly fits on CFORCE 520/ 520 L, easy to install
- Helps keep cargo securely in place
- This extender can fit on both of front rack and rear rack



Front Rack Extender Assembly

Accessory Code: 9DQV-802200-3000

Features:

- Steel Tube Diameter: \varnothing 22mm
- Durable, E-coated with black powder coat
- Perfectly fits on CFORCE 450/ 450 L, easy to install
- Helps keep cargo securely in place



Rear Rack Extender Assembly

Accessory Code: 9DQV-802300-3000

Features:

- Steel Tube Diameter: \varnothing 22mm
- Durable, E-coated with black powder coat
- Perfectly fits on CFORCE 450 /450 L, easy to install
- Helps keep cargo securely in place



CFORCE

450 / 450 L
520 / 520 L



CFORCE 450 / 450 L CFORCE 520 / 520 L

Front Basket Assembly

Accessory Code: 9DQV-802100-3000

Features:

- Perfectly fit on CFORCE 450 /450 L & CFORCE 520/ 520 L
- Large storage capacity can take 3 open face helmets
- Have 7 rope holes/handgrip holes on the basket
- Stylish look, Heavy duty plastic
- With CF Connect, Easy to install and remove, Tool-less
- Work with CFMOTO Tool Holder, can take more tools
- Need to order 4 CFConnect seats (9DQV-809100-3000) with the front basket for CFORCE 450 / 450 L



Cargo Box Assembly (plastic latch)

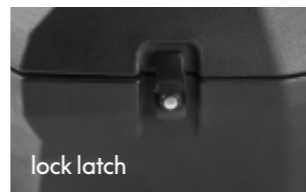
Accessory Code: 9DQV-806100-3001

Features:

- Large storage capacity (26 Gallons, 100 Liters) can take 3 open face helmets
- Lockable lid, Stylish look, Heavy duty plastic
- With CF Connect, Easy to install and un-install, Tool-less
- No mounting holes inside of the cargo box, a perfect Water tight seal

Cargo Box Assembly (lock latch)

Accessory Code: 9DQV-806100-3002



Front Cargo Box Assembly (lock latch)

Accessory Code: 9DQV-806200-3000

Features:

- Large storage capacity (14 Gallons, 54 Liters)
- Stylish look, Heavy duty plastic
- The lid can be lifted by spring support, no fall down
- The lid is multi-functional, with mounting holes for installing CFMOTO tool holders (852114-00001) or rack extender (9DQV-802200-3000), so some items can be loaded on the box firmly. (tools holders and rack extender need to be purchased individually.)
- With CFConnect, Easy to install and un-install, Tool-less
- With water seal on the lid and No mounting holes inside of the box, a perfect water tight seal
- The box bottom has draining hole for easy cleaning the inside of the box
- Perfectly fit on CFORCE 450 /450 L & CFORCE 520 /520 L

*Need to order 4 CFConnect seats (9DQV-809100-3000) with the front cargo box for CFORCE 400 S / 400 Touring
*Rack extender and tools holders need to be purchased individually



Cooler Box Assembly

Accessory Code: 9CQV-806800-3000

Features:

- 46L (12 U.S. gallon) cooler box.
- With CFConnect clamps, cooler box can be easily installed and un-installed.
- Rotomolded construction provides extreme rigidity and durability.
- Good seal and premium-quality foam insulation can ensure optimal ice retention.
- One removable compartment protects food.
- Use 2 robust rubber latches ensure the cover tightly closed.
- One drain plug can drain liquid from the cooler box easily

*This cooler box can be installed on CFORCE 500 S / 500 Touring (U.S.) and CFORCE 520 / 520 L (Europe and others). But it can not be installed on CFORCE 400 S / 400 Touring or CFORCE 450 / 450 L
*This cooler box can be installed on UFORCE 600 which equipped front rack. But Consumer's front sight will be affected by the box. So consumers can order the cooler box as their need



CFConnect Mount Assembly

Accessory Code: 9DQV-809100-3000

Features:

- The mount is used to installed on CFORCE 450 /450 L racks for attaching CFConnect clamp

*CFORCE 450 and CFORCE 450 L racks have no CFConnect mounting holes
*Consumers need to install the CFConnect Mounts on the racks of CFORCE 400 S and CFORCE 400 Touring before using CFConnect clamps to install box, basket, cooler box or other accessories on these ATVs



CFORCE 450 / 450 L & 520 / 520 L

HDPE Skid Plate Assembly – 1UP

Accessory Code: 9DQV-804100-3000

HDPE Skid Plate Assembly – 2UP

Accessory Code: 9CQV-804200-3000

Features:

- Made of high density polyethylene HDPE (thickness 8mm)
- Ultimate durability
- Offering great protection in rough terrain
- Perfectly fit on CFORCE 450/ 450 L & CFORCE 520/ 520 L

**Front Windshield Assembly**

Accessory Code: 9DQV-805200-3000

Features:

- Made of impact-resistant Acrylic
- Stable, quiet at low speed riding condition
- Excellent visibility, UV and weather endurance with no yellowing
- Driver wind protection
- Easy to install

**Winch Assembly**

Accessory Code: 9CQV-807000-3000

Features:

- winch kit can be easily installed on the wired vehicle.
- 50 ft. of 3/16" (15.2 m) wire steel cable.
- Pulling strength capability of 2,500 lb (1,134 kg).
- Heavy-duty four-way roller fairlead.
- Rugged all-steel gears and bushings provide more torque and longer life.
- Sealed solenoid for all-weather protection.
- Weather-sealed handlebar-mounted switch.
- EC-compliant.
- Wired remote control, wireless remote control, fairlead and synthetic rope are accessories of the winch kit. They are sold separately

*please be noted that steel rope is standard for winch and synthetic rope need to be purchased individually



CFORCE
450 / 450 L
520 / 520 L

Fender Flares Assembly

Accessory Code: 9DQV-803100-3000

Features:

- Made of high strength polyethylene (thickness 2.5mm) for abrasion resistance
- Ultimate durability
- Integrated extended fender flares for full body protection from dirt and water

**Hand Guard Kit (New Royal Blue)**

Accessory Code: 9DRV-804500-3000

Hand Guard Kit (Camo)

Accessory Code: 9DRV-804600-3000

Hand Guard Kit (Red)

Accessory Code: 9DRV-804700-3000

Hand Guard Kit (Orange)

Accessory Code: 9DRV-804800-3000

Features:

- Protect driver's hands
- Hard plastic cover and plastic bracket
- Fit on CFORCE 400 / 400 Touring & CFORCE 500 / 500 Touring



CFORCE 450 / 450 L & 520 / 520 L

Front Bumper Assembly

Accessory Code: 9DS#-801100-6000

Features:

- Steel Tube diameter 38mm & wall thickness 2mm
- Durable, E-coated with black powder coat
- Easy to install
- Provides front protection of vehicle
- Headlight protection
- Works with winch system and plow system



Rear Bumper Assembly

Accessory Code: 9DS#-801200-6000

Features:

- Steel Tube diameter 38mm & wall thickness 2mm
- Durable, E-coated with black powder coat
- Easy to install
- Provides rear protection of vehicle
- Taillight protection
- Works hitch system



Windshield Assembly (new)

Accessory Code: 9DS#-805100-6000

Features:

- Made of impact-resistant Acrylic
- Stable, quiet at low speed riding condition
- UV and weather endurance with no yellowing
- Driver wind protection
- Excellent visibility
- Easy to install



CFORCE 625 & 625 Touring



Front Bumper Assembly – light protection

Accessory Code: 9DS#-801400-6000

Features:

- Steel Tube diameter 32mm & wall thickness 2mm
- Durable, E-coated with black powder coat
- Easy to install
- Provides front protection of vehicle
- Headlight protection
- Works with winch system and plow system



Rear Bumper Assembly – light protection

Accessory Code: 9DS#-801300-6000

Features:

- Steel Tube diameter 32mm & wall thickness 2mm
- Durable, E-coated with black powder coat
- Easy to install
- Provides rear protection of vehicle
- Taillight protection
- Works hitch system



Front Rack Extender Assembly - one piece

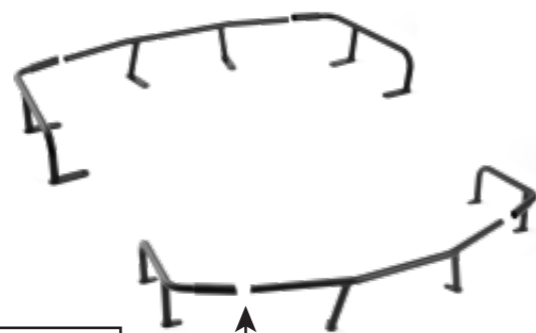
Accessory Code: 9DS#-802300-6000

**Features:**

- Integrated rack extender
- Steel Tube Diameter: $\varnothing 22\text{mm}$
- Durable, E-coated with black powder coat
- Easy to install
- Helps keep cargo securely in place

Front Rack Extender Assembly - separated

Accessory Code: 9DS#-802100-6000

**Rear Rack Extender Assembly - separated**

Accessory Code: 9DS#-802200-6000

Features:

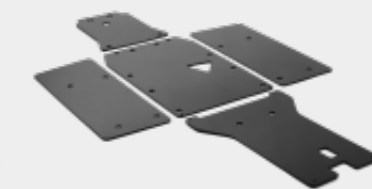
- Steel Tube Diameter: $\varnothing 22\text{mm}$
- Durable, E-coated with black powder coat
- Easy to install
- Helps keep cargo securely in place
- Small carton package save the freight cost

CFORCE

625 & 625 Touring

**HDPE Skid Plate Assembly - 2UP**

Accessory Code: 9CSV-805200-6400

**HDPE Skid Plate Assembly - 1UP**

Accessory Code: 9DSV-805300-6000

**Features:**

- Made of high density polyethylene HDPE (thickness 8mm)
- Ultimate durability
- High impact strength
- Offering great protection in rough terrain

Aluminum Skid Plate Assembly - 2UP

Accessory Code: 9CS#-804200-6400

**Aluminum Skid Plate Assembly - 1UP**

Accessory Code: 9DS#-804300-6000

**Features:**

- Made of high strength aluminum (thickness 5mm)
- Ultimate durability
- High impact strength
- Offering great protection in rough terrain

CFORCE

625 & 625 Touring

Front Basket Assembly

Accessory Code: 9DSV-802100-6000

Features:

- Perfectly fit on CFORCE 625 and CFORCE 625 Touring
- Large storage capacity can take 3 open face helmets
- Have 9 rope holes/handgrip holes on the basket
- Stylish look, Heavy duty plastic
- With CF Connect, Easy to install and remove, Tool-less
- Work with CFMOTO Tool Holder, can take more tools



Cargo Box Assembly (plastic latch)

Accessory Code: 9DSV-806100-6001

Cargo Box Assembly (lock latch)

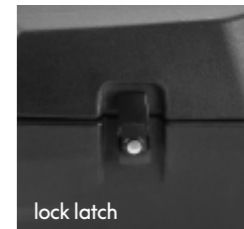
Accessory Code: 9DSV-806100-6002

Features:

- Large storage capacity (24 Gallons, 90 Liters) can take 2 open face helmets and 1 full face helmet
- Lockable lid, Stylish look, Heavy duty plastic
- With CF Connect, Easy to install and un-install, Tool-less
- No mounting holes inside of the cargo box, a perfect Water tight seal



plastic latch



lock latch

Cargo Box Assembly (plastic latch)

Accessory Code: 9DSV-806100-6003

Cargo Box Assembly (lock latch)

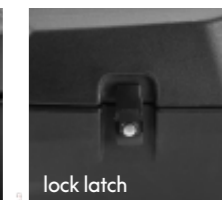
Accessory Code: 9DSV-806100-6004

Features:

- Large storage capacity (24 Gallons, 90 Liters) can take 2 open face helmets and 1 full face helmet
- Lockable lid, Stylish look, Heavy duty plastic
- With CF Connect, Easy to install and un-install, Tool-less
- No mounting holes inside of the cargo box, a perfect Water tight seal



plastic latch



lock latch



CFORCE

850 XC & 1000



Windshield Assembly (new)

Accessory Code: 9AWV-806100-2000

Features:

- Made of impact-resistant Acrylic (5mm)
- Stable, quiet at low/speed riding condition
- UV and weather endurance with no yellowing
- Driver wind protection
- Excellent visibility
- Easy to install



Front Bumper Assembly – Overland

Accessory Code: 9AW#-801100-2000

Features:

- Steel Tube diameter 38mm & wall thickness 2mm
- Durable, E-coated with black powder coat
- Easy to install
- Provides front protection of vehicle
- Headlight protection
- Anti-corrosion coating with durable coat finish
- Works with winch system and plow system



Rear Bumper Assembly – Overland

Accessory Code: 9AW#-801200-2000

Features:

- Steel Tube diameter 38mm & wall thickness 2mm
- Durable, E-coated with black powder coat
- Easy to install
- Provides rear protection of vehicle
- Taillight protection
- Anti-corrosion coating with durable coat finish
- Works hitch system



Front Rack Extender Assembly

Accessory Code: 9AW#-802300-2000

Rear Rack Extender Assembly

Accessory Code: 9AW#-802400-2000

Features:

- Integrated rear rack extender
- Steel Tube Diameter: \varnothing 22mm
- Durable, E-coated with black powder coat
- Easy to install
- Helps keep cargo securely in place



Front Bumper Assembly – Light Protection

Accessory Code: 9AWA-800100

Features:

- Steel Tube diameter 35mm & wall thickness 2mm
- Durable, E-coated with black powder coat
- Easy to install
- Provides front protection of vehicle
- Headlight protection
- Anti-corrosion coating with durable coat finish
- Works with winch system and plow system



Rear Bumper Assembly – light protection

Accessory Code: 9AWA-800200

Features:

- Steel Tube diameter 35mm & wall thickness 2mm
- Durable, E-coated with black powder coat
- Easy to install
- Provides rear protection of vehicle
- Taillight protection
- Anti-corrosion coating with durable coat finish
- Works hitch system



CFORCE 850XC & 1000

Nerf Bars Assembly

Accessory Code: 9AWA-800300

Features:

- Steel Tube diameter 30mm & wall thickness 2mm
- Durable, E-coated with black powder coat
- Easy to install
- Provides side protection of vehicle
- Anti-corrosion coating with durable coat finish



Aluminum Winch Armor Assembly

Accessory Code: 9AWA-800400

Features:

- Made of high strength aluminum (thickness 3mm)
- Ultimate durability
- High impact strength
- Offering great protection for winch

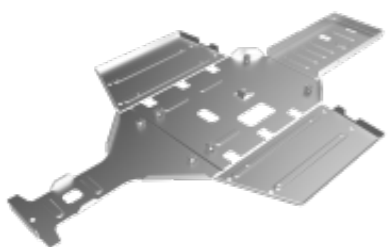


Aluminum Skid Plate Assembly

Accessory Code: 9AWA-800500

Features:

- Made of high strength aluminum (thickness 3mm)
- Ultimate durability
- High impact strength
- Offering great protection in rough terrain



CFORCE

850 XC & 1000

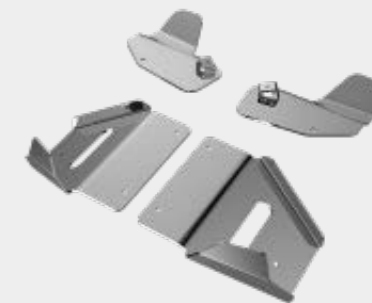


A-arm Protector Assembly

Accessory Code: 9AWA-800600

Features:

- Made of high strength aluminum (thickness 3mm)
- Ultimate durability
- High impact strength
- Offering great protection for A-arms in rough terrain



Rear Cargo Box Assembly

Accessory Code: 9AYV-806100-2A00

Features:

- Large storage capacity (30 Gallons, 115 Liters) can take 4 open face helmets
- Lockable lid, Stylish look, Heavy duty plastic
- Water tight seal
- With CF Connect, Easy to install and un-install, Tool-less
- Fit on CFORCE 850 XC & CFORCE 1000 perfectly



Center Cargo Box Assembly

Accessory Code: 9AYV-806200-2A00

Features:

- Large storage capacity (15.8 Gallons, 60 Liters)
- Lockable lid
- With CF Connect, Easy to install and un-install, Tool-less
- Stylish look
- Heavy duty plastic
- Fit on CFORCE 850 XC & CFORCE 1000 perfectly
- No mounting holes inside of cargo box, a perfect Water tight seal





Hand Guard Assembly With Fairing

Accessory Code: 9AYV-805100-2A00

Features:

- Integrated hand guard protect driver's hands
- Hard plastic cover with a small windshield
- Fit on CFORCE 850 XC & CFORCE 1000 perfectly



Vehicle Cover

Accessory Code: 85204Z-00600

Features:

- Made of UV-resistant solution black yarn-dyed Oxford PU
- Protects windshield and colored panels from abrasion
- Weather-resistant trailering cover protects your vehicle during storage and transportation
- Perfectly fit CFORCE 850 XC and 1000 with or without CFMOTO accessories



Hand Guard Assembly With Fairing

Accessory Code: 9AYV-805100-2A00

Features:

- Integrated hand guard protect driver's hands
- Hard plastic cover with a small windshield
- Fit on CFORCE 850 XC & CFORCE 1000 perfectly



CFORCE 850 XC & 1000



14" Front Wheel Assembly – U.S. standard

Accessory Code: 9AYV-807100-2A00

Features:

- New type 14" Rim,
- New type 27" Tire, for U.S. standard only. Not for Europe Standard.
- Beadlock for 14" Rim
- Fit on CFORCE 850 XC & CFORCE 1000 perfectly



14" Rear Wheel Assembly – U.S. standard

Accessory Code: 9AYV-807200-2A00

Features:

- New type 14" Rim
- New type 27" Tire, for U.S. standard only. Not for Europe Standard.
- Beadlock for 14" Rim
- Fit on CFORCE 850 XC & CFORCE 1000 perfectly

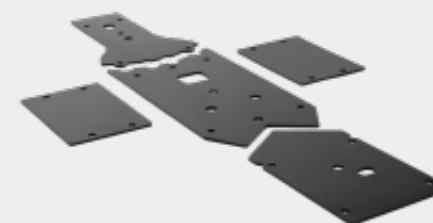


HDPE Skid Plate Assembly

Accessory Code: 9AWV-804100-2000

Features:

- Made of high density polyethylene HDPE (thickness 8mm)
- Ultimate durability
- High impact strength, Ultimate durability
- Offering great protection in rough terrain
- Fit on CFORCE 850 XC & CFORCE 1000 perfectly



A-arm Protector Assembly

Accessory Code: 9AWV-804200-2000

Features:

- Made of high strength aluminum (thickness 5mm)
- Painting Black
- Ultimate durability
- Offering great protection for A-arms in rough terrain





CFORCE UNIVERSAL

Passenger Gauntlet Assembly

Accessory Code: 85214G-00001

Features:

- Outer made of Canvas, Inside made of polyester fiber
- Keep passenger's hands warm in the cold weather
- With Velcro and snap-fit, easy to install and remove



Canvas Storage Bag

Accessory Code: 9DS#-809200-6000

Features:

- Transport gear in a weatherproof bag
- IPX4 waterproof
- Large capacity 99L
- Designed to maximize potential storage
- Extra compartments on top to store goods



Passenger Infill Rack Assembly

Accessory Code: 9DSV-803100-6000

Features:

- Passenger infill rack extend the loading capacity of ATV
- Built a big flat rear rack for taking big items.
- With CF Connect mounting holes, more accessories can be installed on the rack easily.
- Easy to install and remove, Tool-less



Tools Box Assembly

Accessory Code: 5BYV-804100-1000

Features:

- Tool box can take the necessary tools and small items
- Use Velcro to lock the tool box on vehicle, easy to change the place
- With tool box, consumer can get the tool anytime and anywhere.
- L x W x H: 422 x 170 x 57mm (16.6 x 6.9 x 2.2 inch)



CFMOTO Tool Holder, Pair

Accessory Code: 852114-00001

Features:

- Tool Holder FlexGrip™ by ATV-TEK with CFConnect™ system
- A true custom fit for your lifestyle, use it for guns, bows, tools, or any other item.
- CFMOTO riders have effortless installation and versatility thanks to a finger adjustable rotation of the grip and convenient mounting options with CFConnect™



UNIVERSAL

CFORCE UNIVERSAL



Oil Filter Kit

Accessory Code: 080V-808200-1000

Features:

- The kit includes 1 pcs oil filter (0800-011300-0004), 1 pcs oil seal ring (0800-014003), 1 pcs washer (0010-021014), 1 pcs washer (0JWA-021003) and 1 pcs bandana (TSCGN236)
- Make the service and maintenance be easy
- Apply to CFMOTO 400cc-1000cc CFORCE, UFORCE and ZFORCE

*washer (0JWA-021003) is for 800cc and 1000cc vehicle only
*If apply this oil filter kit to other vehicles, you do not need to use this spacer.
Please keep it in a safety place for future using



Heated Grips & Thumb Throttle Assembly

Accessory Code: 9DQV-808100-3000

Accessory Code: 9DQV-808200-3000

Features:

- LED dimmer facilitates reading temperature settings
- 4 temperature settings for thumb and grips
- Perfectly fit on CFMOTO ATV

*9DQV-808100-3000 apply to CFORCE 450/ 450 L & CFORCE 520/ 520 L
*9DQV-808200-3000 apply to CFORCE 625/ 625 Touring & CFORCE 850 XC/1000



Whip Flag

Accessory Code: 9DSV-807100-6000

Accessory Code: 9DSV-807200-6000

Features:

- Make sure everyone knows what you are riding
- Perfect for the dunes and new riders
- 7.5-ft.(2.3m) length
- Includes flag mount
- 9DSV-807100-6000 apply to CFMOTO CFORCE 450/ 450 L & CFORCE 520/ 520 L and Youth ATV
- 9DSV-807200-6000 apply to CFMOTO CFORCE 625 / 625 Touring & CFORCE 850 XC / 1000.



CFConnect Clamp Kit

Accessory Code: 9DS#-809000-6000

Features:

- This kit includes a pair of CFConnect clamps
- CFMOTO owns the patents of CFConnect Clamp
- CFConnect Clamp can be used on all CFMOTO vehicles for installing and un-installing CFMOTO accessories easily
- The clamps can be used to fix CFMOTO cargo boxes, baskets, cooler boxes and bed racks on vehicles firmly



UNIVERSAL

CFORCE

TOWING

Winch Rope Fairlead

Accessory Code: 7030-150701

Features:

- Used with CFMOTO winch
- Aluminum fairlead reduces wear on wire rope for heavy attachment application



Synthetic Winch Rope

Accessory Code: 7020-800750

Features:

- High strength winch rope, pull up to 4500 lbs
- Rope length up to 12 meters
- Light weight, easy to carry
- Durable, sea water resistance, UV resistance and temperature difference repetition, etc
- Convenient, fast and safe operation



Tree Saver Strap

Accessory Code: 9DS#-808302-6000

Features:

- Large eyes with heavy duty chafe protection allow for easy rigging
- Bright yellow nylon provide excellent visibility when winching
- Center chafe protects from abrasion damage



Plow Strap

Accessory Code: 9DQV-808500-3000

Features:

- Apply to CFMOTO plow
 - A reliable 45.6 inches (1.16m) length strap that replaces winch rope for lifting plow (Total length = 70.5 inches (1.79m))
 - 1.25 inches (32mm) Wide design reduces wear and tear on winch roller or fairlead
- Made from durable polyester fiber material, can bear as much as 3200lbs pull capacity

*The other parts of the plow system need to be purchased separately



Hitch Kit (2", 136mm)

Accessory Code: 7000-808100

Features:

- 2 inch hitch kit for ATV/UTV
- 136mm length towing bar (from pin shaft hole to hitch ball hole)
- Easy to install and remove
- E-coated with black powder coat



Hitch Kit (2", 290mm)

Accessory Code: 9AW#-808100

Features:

- 2 inch hitch kit for ATV/UTV
- 290mm length towing bar (from pin shaft hole to hitch ball hole)
- Easy to install and remove
- E-coated with black powder coat



Power Socket & Adaptor Assembly (8 pins)

Accessory Code: 9DQV-800200-3000

Features:

- Use for all CFMOTO vehicle with trailer
- The socket cover defense against dirt and water
- Power socket is for trailer in most markets, added Adaptor is for North America Market

*For CFMOTO vehicles without trailer power socket

Power Socket & Adaptor Assembly (6 pins)

Accessory Code: 7020-800200-1000

Features:

- Use for all CFMOTO vehicle with trailer
- The socket cover defense against dirt and water
- Power socket is for trailer in most markets, added Adaptor is for North America Market
- It is for 6 pins plug

*For CFMOTO vehicles without trailer power socket



CFORCE SNOW PLOW



60" Plow Blade Assembly

Accessory Code: 9AWV-804300-2000

Features:

- Plow wall thickness 2.5mm
- Attach the plow push tube at the front of CFMOTO vehicle easily
- Increased sacrifice anodes for longer use of snow plows
- E-coated with black powder coat
- Make the job easier with the right tools, clear long alleys and make the task easier by sending the snow further out of the way



72" Plow Blade Assembly

Accessory Code: 5HYV-804300-1000

Features:

- Plow wall thickness 2.5mm
- Attach the plow push tube at the front of CFMOTO vehicle easily
- Increased sacrifice anodes for longer use of snow plows
- E-coated with black powder coat
- Make the job easier with the right tools, clear long alleys and make the task easier by sending the snow further out of the way



60" Plow Deflector Assembly

Accessory Code: 9AWV-804500-2000

72" Plow Deflector Assembly

Accessory Code: 5HYV-804500-1000

Features:

- For CFMOTO Snow Plow
- Keeps snow from flying into your face
- Made of hard rubber
- Use metal plate and bolts to lock deflector on plow firmly
- Compatible with plow markers & fenders

*The other parts of the plow system need to be purchased separately



Plow Fenders, Pair

Accessory Code: 5HYV-804400-1000

Features:

- For CFMOTO plow, Sold in pairs
- Wall Thickness: 3mm
- Install on CFMOTO plow system easily
- E-coated with black powder coat



Plow Mount Bracket Assembly

Accessory Code: 9AYV-804200-2000

Features:

- For CFORCE 850 XC & CFORCE 1000
- Wall Thickness: 6mm
- Install on the front of CFMOTO vehicle easily and lock the plow push tube easily
- Increased sacrifice anodes for longer use of snow plows
- E-coated with black powder coat



Plow Mount Bracket Assembly

Accessory Code: 9DSV-804100-6000

Features:

- For CFORCE 450/ 450 L & 520/ 520 L & CFORCE 625 & 625 Touring
- Wall Thickness: 6mm
- Install on the front of CFMOTO vehicle easily and lock the plow push tube easily
- Increased sacrifice anodes for longer use of snow plows
- E-coated with black powder coat

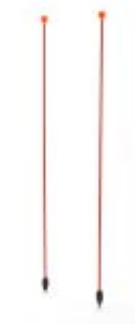


Plow Markers, Pair

Accessory Code: 5HYV-806400-1000

Features:

- For CFMOTO plow, Sold in pairs
- Height: 75mm (29.5 inch)
- Bright orange color, help locate the edges of plow
- Install on CFMOTO plow system easily



Plow Push Tube Assembly

Accessory Code: 5HYV-804200-1000

Features:

- For CFMOTO plow
- Plow wall thickness 5mm
- Attach the plow mount bracket at the front of CFMOTO vehicle easily
- Increased sacrifice anodes for longer use of snow plows
- E-coated with black powder coat





| REF | PRODUCT NAME | PRODUCT CODE | POWER | STARTING | STANARDED | |
|-----|--|--------------|-------|----------|-----------|--------------|
| 1 | GENERATOR - i20 | 852100-00004 | 2.0kw | Recoil | EUROPE | 230volt/50Hz |
| 2 | | 852100-00005 | | | U.S. | 120volt/60Hz |
| 3 | | 852100-00034 | | | Canada | 120volt/60Hz |
| 4 | | 852100-00006 | | | Australia | 230volt/50Hz |
| 5 | | 852100-00019 | | | China | 230volt/50Hz |
| 6 | | 852100-00024 | | | Korean | 220volt/60Hz |
| 7 | | 852200-00018 | | | U.K. | 230volt/50Hz |
| 8 | GENERATOR - i200 <small>(new body design + 5V/2A USB)</small> | 852200-00001 | 2.3kw | Recoil | EUROPE | 230volt/50Hz |
| 9 | | 852200-00002 | | | U.S. | 120volt/60Hz |
| 10 | | 852200-00004 | | | Canada | 120volt/60Hz |
| 11 | | 852200-00003 | | | Australia | 230volt/50Hz |
| 12 | | 852200-00003 | | | China | 230volt/50Hz |
| 13 | | 852200-00003 | | | Korean | 220volt/60Hz |
| 14 | | 852200-00015 | | | U.K. | 230volt/50Hz |

| REF | PRODUCT NAME | PRODUCT CODE | POWER | STARTING | STANARDED | |
|-----|--|--------------|-------|----------|-----------|--------------|
| 1 | GENERATOR - i25 | 852100-00007 | 2.4kw | Recoil | EUROPE | 230volt/50Hz |
| 2 | | 852100-00008 | | | U.S. | 120volt/60Hz |
| 3 | | 852100-00035 | | | Canada | 120volt/60Hz |
| 4 | | 852100-00009 | | | Australia | 230volt/50Hz |
| 5 | | 852100-00020 | | | China | 230volt/50Hz |
| 6 | | 852100-00025 | | | Korean | 220volt/60Hz |
| 7 | | 852200-00019 | | | U.K. | 230volt/50Hz |
| 8 | GENERATOR - i250 <small>(new body design + 5V/2A USB)</small> | 852200-00005 | 2.6kw | Recoil | EUROPE | 230volt/50Hz |
| 9 | | 852200-00006 | | | U.S. | 120volt/60Hz |
| 10 | | 852200-00008 | | | Canada | 120volt/60Hz |
| 11 | | 852200-00007 | | | Australia | 230volt/50Hz |
| 12 | | 852200-00007 | | | China | 230volt/50Hz |
| 13 | | 852200-00007 | | | Korean | 220volt/60Hz |
| 14 | | 852200-00016 | | | U.K. | 230volt/50Hz |



| REF | PRODUCT NAME | PRODUCT CODE | POWER | STARTING | STANARDED | |
|-----|--|--------------|-------|----------|-----------|--------------|
| 1 | GENERATOR - i30 | 852100-00010 | 3.0kw | Recoil | EUROPE | 230volt/50Hz |
| 2 | | 852100-00011 | | | U.S. | 120volt/60Hz |
| 3 | | 852100-00036 | | | Canada | 120volt/60Hz |
| 4 | | 852100-00012 | | | Australia | 230volt/50Hz |
| 5 | | 852100-00021 | | | China | 230volt/50Hz |
| 6 | | 852100-00026 | | | Korean | 220volt/60Hz |
| 7 | | 852200-00020 | | | U.K. | 230volt/50Hz |
| 8 | GENERATOR - i300 <small>(new body design + 5V/2A USB)</small> | 852200-00009 | 2.6kw | Recoil | EUROPE | 230volt/50Hz |
| 9 | | 852200-00010 | | | U.S. | 120volt/60Hz |
| 10 | | 852200-00012 | | | Canada | 120volt/60Hz |
| 11 | | 852200-00011 | | | Australia | 230volt/50Hz |
| 12 | | 852200-00011 | | | China | 230volt/50Hz |
| 13 | | 852200-00011 | | | Korean | 220volt/60Hz |
| 14 | | 852200-00017 | | | U.K. | 230volt/50Hz |



| REF | PRODUCT NAME | PRODUCT CODE | POWER | STARTING | STANARDED | |
|-----|------------------|--------------|-------|----------|-----------|--------------|
| 1 | GENERATOR - i45 | 852100-00013 | 4.5kw | Recoil | EUROPE | 230volt/50Hz |
| 2 | | 852100-00014 | | | U.S. | 120volt/60Hz |
| 3 | | 852100-00037 | | | Canada | 120volt/60Hz |
| 4 | | 852100-00015 | | | Australia | 230volt/50Hz |
| 5 | | 852100-00022 | | | China | 230volt/50Hz |
| 6 | | 852100-00027 | | | Korean | 220volt/60Hz |
| 7 | | 852200-00021 | | | U.K. | 230volt/50Hz |
| 8 | GENERATOR - i45e | 852100-00016 | 4.5kw | Recoil | EUROPE | 230volt/50Hz |
| 9 | | 852100-00017 | | | U.S. | 120volt/60Hz |
| 10 | | 852100-00038 | | | Canada | 120volt/60Hz |
| 11 | | 852100-00018 | | | Australia | 230volt/50Hz |
| 12 | | 852100-00023 | | | China | 230volt/50Hz |
| 13 | | 852100-00028 | | | Korean | 220volt/60Hz |
| 14 | | 852200-00022 | | | U.K. | 230volt/50Hz |

| REF | PRODUCT NAME | PRODUCT CODE | POWER | STARTING | STANARDED | |
|-----|--|--------------|-------|----------|-----------|--------------|
| 1 | GENERATOR - i20 <small>(with parallel function) *parallel cable CF-852022-00001</small> | 852200-00013 | 2.0kw | Recoil | U.S. | 120volt/60Hz |
| 2 | GENERATOR - i30 <small>(with parallel function) *parallel cable CF-852022-00001</small> | 852200-00014 | 2.4kw | Recoil | U.S. | 120volt/60Hz |

